

## Scented Hangers



**Time for a little spring cleaning?**

**Freshen your closet with scents of lavender and roses by hanging your clothing on these simple-to-sew hanger covers. The handy pocket under the flap holds a sachet pouch or use it to hide your “mad” money or jewels! The cover shape just invites creativity whether it’s patchwork or serging techniques.**

**Try them all—once you start sewing, you can’t stop after making one hanger cover!**

## SUPPLIES:

(finished size for one hanger cover: approximately 13-1/2" x 15-1/4")

1/2 yard of cotton fabric for outside

1/2 yard of cotton fabric lining and pouch

1/4 yard of two coordinating cotton fabrics (for patchwork or serged strips)

1/2 yard of lightweight of fusible interfacing

1 to 2 yards of 1-1/2"-wide grosgrain ribbon (for binding and strips or trim)

Rotary cutter, ruler and mat

Iron

White Quilters' Star 1780,

White Superlock 1934D

Decorative threads (OPTIONAL- e.g. Decor 6)

1/2 yard of thin fusible cotton batting (OPTIONAL)

Quilter's Basting Spray (OPTIONAL)

Monofilament thread (OPTIONAL)

Buttons or Velcro® brand SEW-ON coins (OPTIONAL)

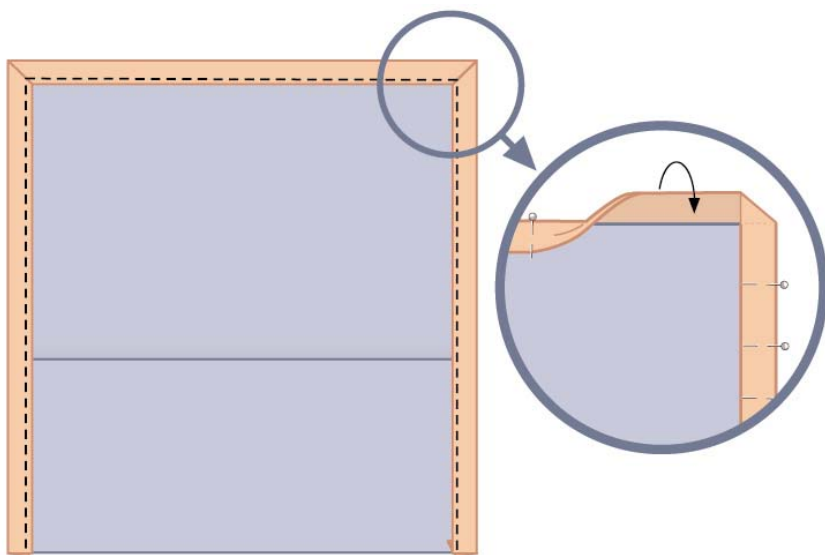
## For a one-piece hanger cover

### PREPARATION:

Cut one 13-1/2" x 15-3/4" pieces from the cotton fabric and one from the lining. Cut one 13-1/2" x 15-3/4" piece from the fusible interfacing.

### LET'S SEW:

1. Fuse the interfacing to the wrong side of the lining piece, following the manufacturer's instructions.
2. Pin the outer fabric to the lining, wrong sides together. Using the longest stitch length, baste the piece together.
3. Place marks 6" up on each side of the 15-3/4". Fold along this line to make the pocket.
4. To bind the cover with ribbon, press the ribbon in half lengthwise and fold in 1/4" on one end of the ribbon. Beginning in a bottom corner, wrap one half of the ribbon to the front and one-half to the back around the edge of the pocket, up the side, across the top and down the other side of the hanger cover.



HINT: Use a glue stick or pins to help hold the ribbon in place. Miter the ribbon at each corner. This ribbon-binding technique can be used on any of the hanger covers.

5. Fold the top down over the pocket and mark for buttonholes or Velcro® brand SEW-ON coins to close. Sew buttonholes or attach Velcro® coins.

## For a two-piece hanger cover

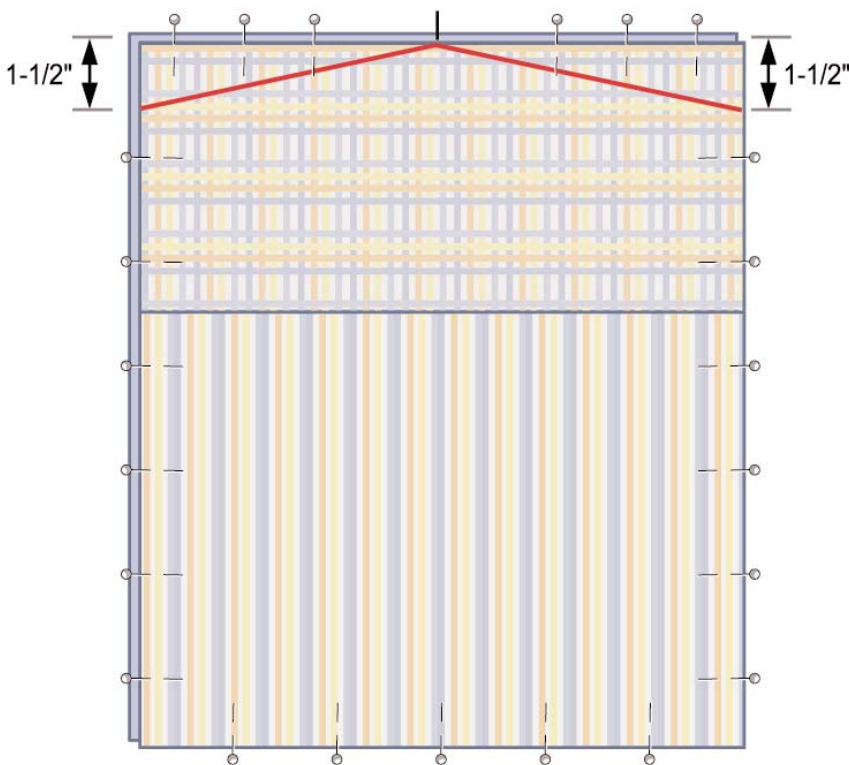
### PREPARATION:

Cut one 13-1/2" x 6" piece and one 13-1/2" x 9-3/4" piece from the outer fabric. Cut one 13-1/2" x 15-3/4" piece for the lining. Cut one 13-1/2" x 15-3/4" piece from the fusible interfacing.



### LET'S SEW:

1. Fuse the interfacing to the wrong side of the lining piece, following the manufacturer's instructions.
2. Using the Piecing Foot that comes with the White Quilters' Star 1780, stitch the the two pieces of the outer fabric together along the 13-1/2" side with a 1/4" seam allowance.

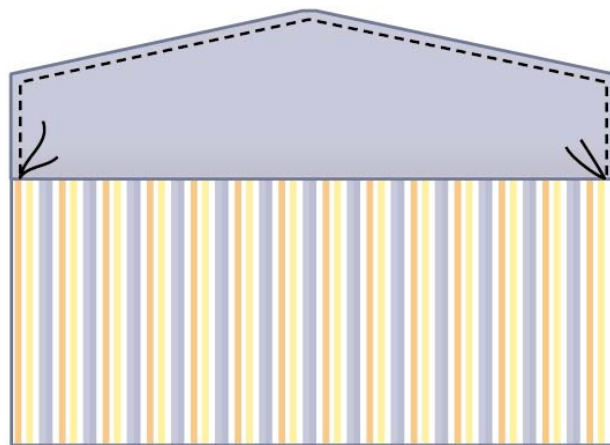


3. On both the lining and the outer fabric pieces, place marks 6" up from the bottom along the 15-3/4" edges. With right sides together, fold up the bottom to make the pocket and pin. Again, using the Piecing Foot, sew 1/4" side seams on both the outer and lining fabrics.
4. With right sides together, pin the lining to the outer fabric along the upper portion of the hanger cover. Find the center of the flap and mark. Place a mark 1-1/2" down from the top on each side; draw lines to the sides from the center mark to contour the flap. Trim the fabric away following the lines.
5. Using your Piecing Foot and a 1/4" seam allowance, stitch from the pocket, up the side, across the flap and down the other

side. Trim the corners and turn to the right side placing the lining pocket inside the outer pocket. Press the edges.

6. Fold in the edges 1/4" along the top of the pocket. Press. Using your Blindhem Foot and adjusting your needle position, edgestitch around the edge of the flap and across the top of the pocket. Position the foot so the guide is against the fabric to keep your stitching straight.

7. Sew two decorative buttons to the front of the hanger cover, placing one on the flap and one below on the pocket. Thread heavy embroidery floss through one button and wrap around the other button to close.



### *For a patchwork hanger cover*

#### **PREPARATION:**

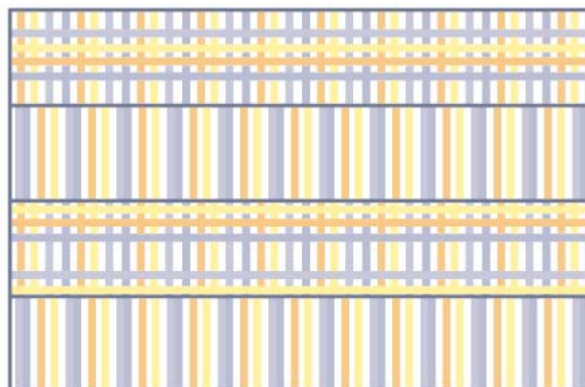
From the one of the two 1/4 yard pieces, cut one 13-1/2" x 9-3/4" piece. Cut two 2-1/2"-wide strips from each fabric. Cut two 1-1/2"-wide x 13-1/2" strips from one fabric. Cut one 13-1/2"

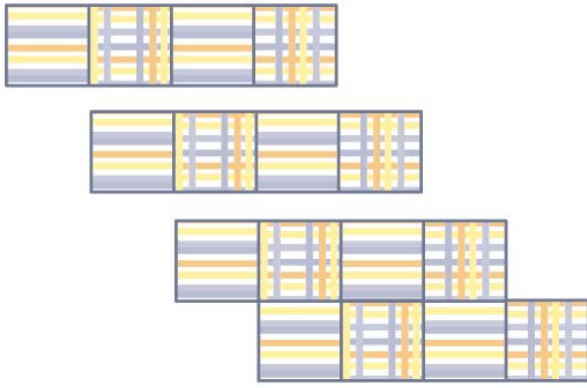


x 15-3/4" piece from the lining and the fusible interfacing.

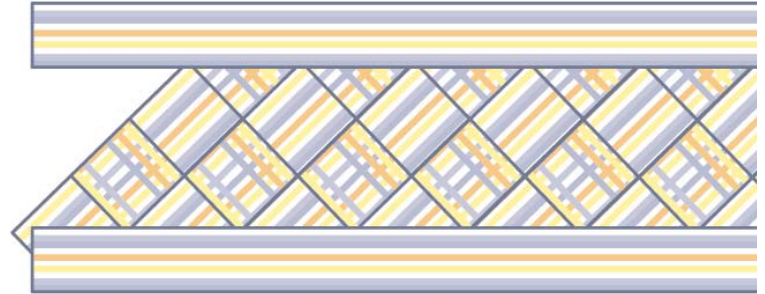
#### **LET'S SEW:**

1. Using the Piecing Foot that comes with the White Quilters' Star 1780, with right sides together, seam the four 2-1/2" strips together with a 1/4" seam allowance alternating the patterns (e.g. design #1, design #2, design #1, etc.) Press the seam allowances in one direction.





2. Cut the sewn piece into 2-1/2" wide strips. Create a seminole design by sewing the new strips together with a 1/4" seam allowance by pinning two strips together offsetting the designs by one block. Continue sewing all the strips together.



3. Add an edging strip to the top and bottom of the pieced section with a 1/4" seam allowance. Press the seam allowances toward the center pieced section.

4. Stitch the pieced section to one 13-1/2"-wide edge of the 9-3/4" piece with a 1/4" seam allowance. Press the seam allowance to one side.

5. Fuse the interfacing to the wrong side of the lining piece, following the manufacturer's instructions.

6. Following steps 2 through 5 for the *one-piece hanger cover* to finish the lining and binding on this hanger cover. Add three buttonholes, spaced evenly on the flap and sew five buttons in place equidistant from each other on the flap and on the pocket.



### *For a serged hanger cover:*

#### **PREPARATION:**

Cut three 15-3/4" strips from two fabrics and two 15-3/4" strips from the ribbon. Cut one 13-3/4" x 15-3/4" piece from the fusible interfacing.



## LET'S SEW:

1. Set up your White Superlock 1934D for a wide flatlock stitch with the heavy decorative thread in the upper looper with standard serger thread in the lower looper and the needle. Test your flatlock stitch on scrap fabric to make sure the stitch length and tensions are correct.

2. With wrong sides together, serge the strips and ribbon pieces together alternating the pieces as shown on the sample here. Review your serger's instruction guide for flatlocking. For best results, a portion of the stitch should fall off the edge of the fabrics. Gently pull the fabrics flat along the strips. Continue serging until you have eight strips serged together.



3. Fuse the interfacing to the wrong side of the lining piece, following the manufacturer's instructions.

4. On both the lining and the outer fabric pieces, place marks 6" up from the bottom along the 15-3/4" edges. With right sides together, fold up the bottom to make the pocket and pin. Again, using the Piecing Foot, sew 1/4" side seams on both the outer and lining fabrics.

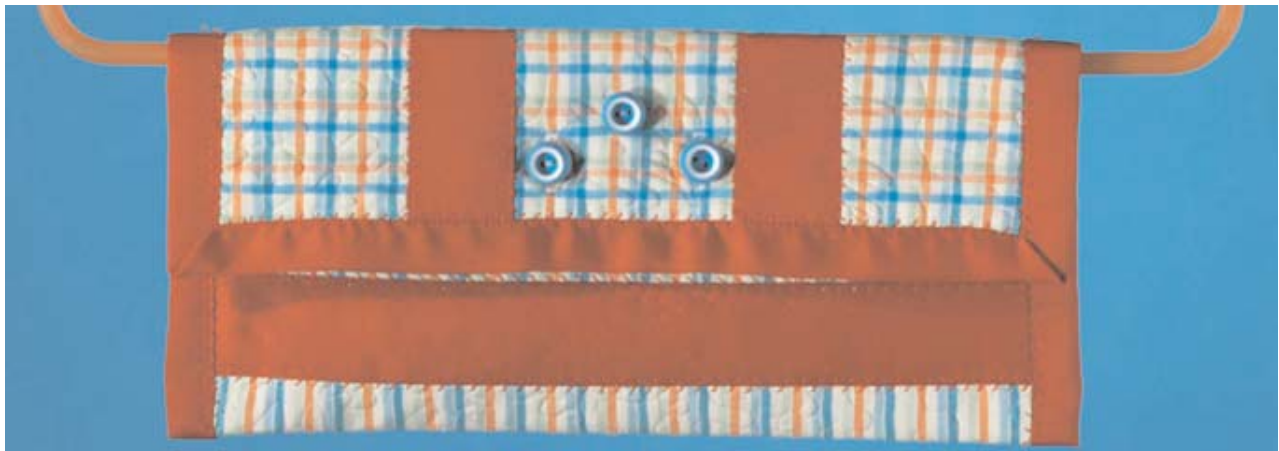
5. With right sides together, pin the flap sections together. Stitch around the flap as you did on the [two-piece hanger cover](#) (step 5).

6. Add buttonholes and sew on buttons using the Button Sew-On Foot in a fun design.

### *For a quilted hanger cover:*

#### **PREPARATION:**

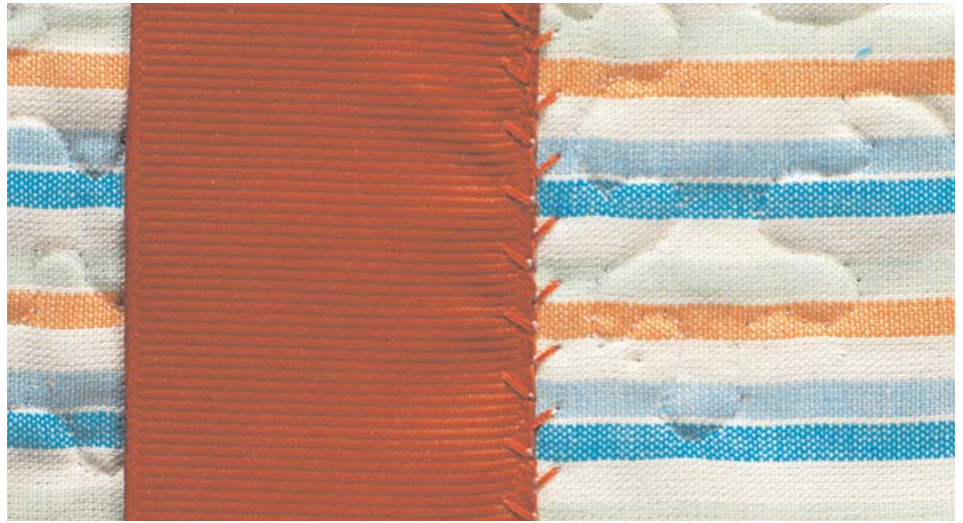
You can make a one- or two-piece hanger cover and meander quilt the outer fabric. Cut your pieces based on the type of cover you want to make. Cut a 13-1/2" x 15-3/4" from the lining and fusible interfacing.



## LET'S SEW:

1. Fuse the cotton batting to the back of the outer fabric piece. If you were unable to find a fusible batting, use a quilter's basting spray to hold the pieces together. Thread your White Quilters' Star 1780 with the monofilament in the needle and a polyester sewing thread on the bobbin.

2. Following your machine's instruction manual, set it up for free-motion stitching. If you have a built-in stippling stitch, select that stitch at this time. Meander quilt across the entire outer fabric.



3. Cut strips of ribbon to couch across the top. Select a feather stitch on your machine and thread the needle and bobbin with a matching or coordinating rayon thread. Place the ribbon in the manner you like on the top and stitch in place with half the stitch on the ribbon and half on the fabric.

4. Insert the lining and bind the edges following the instructions for the [one-piece hanger cover](#) steps 2 through 5.

## Sachet Pouches

You can also be creative when making your sachet pouches. Insert lace, add pintucks, couch embroidered ribbon trim, or monogram your name to the pouch. Start by cutting a 10" x 5-1/2" piece from the lining fabric and then embellish!

